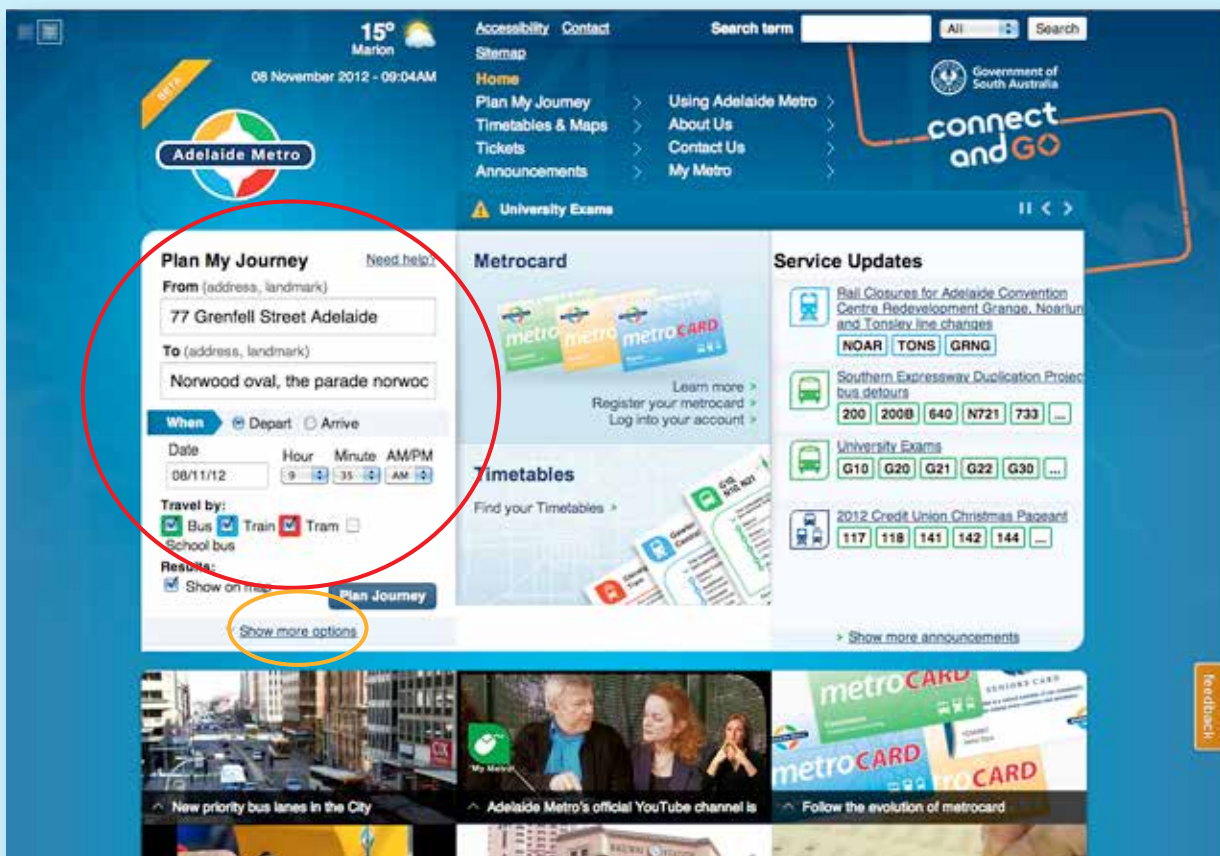


How to develop a public transport journey plan

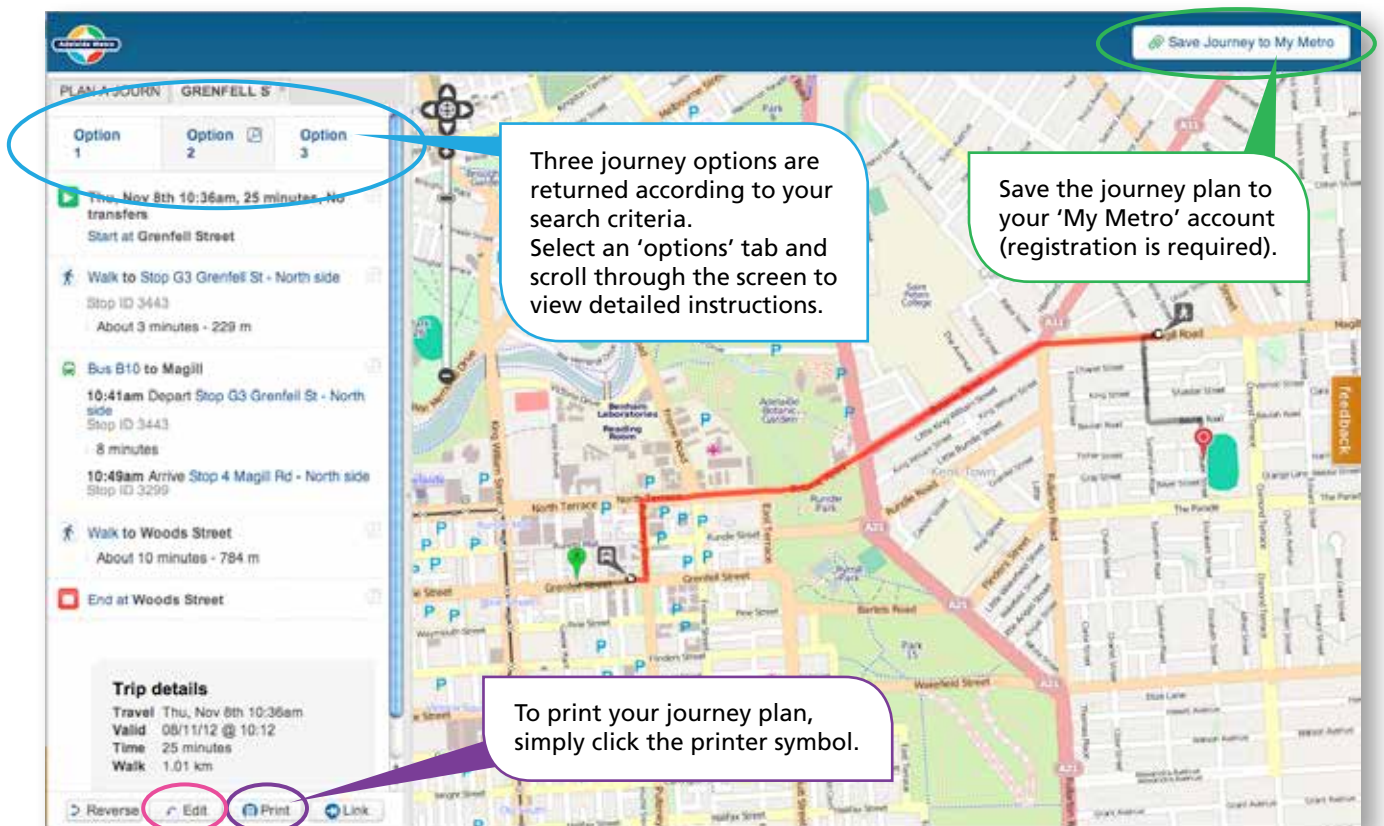


This guide provides a quick overview of how to easily plan your journey online using public transport.

1. To access the online Journey Planner visit adelaidemetro.com.au. The Journey Planner tool is located on the homepage (**red** circle). Fill out the origin and destination locations, date and time of required journey, method of transport (if applicable) and then click on 'Plan Journey'. For more journey planning options select 'show more options' (**orange** circle).



- The results of your enquiry are presented as a map with text instructions. Based on your enquiry, you are presented with the three best routes, times and travelling distance options (**blue** circle). Your best option is described in the left panel and the next two options are revealed when you select the option tabs.



- The first proposed journey option is displayed as written directions in the left panel describing the route, distance of the journey and time taken. The map traces the proposed route in **red**.
- To narrow your search by the type of public transport, limit the number of transfers or the distance you walk in the trip, select the 'edit' button at the bottom of the left panel (**pink** circle).
- You can print the map and directions by clicking on the print tab at the bottom of the page or save your journey to your '**My Metro**' account (**green** circle). You must be registered for My Metro to access this function. A link to the registration form is on the homepage under '**My Metro**'.

How do I find out more?

call: Adelaide Metro InfoLine 1300 311 108
visit: Adelaide Metro InfoCentre corner
King William and Currie Streets
email: DPTI.TravelSmartSA@sa.gov.au
web: adalaidemetro.com.au